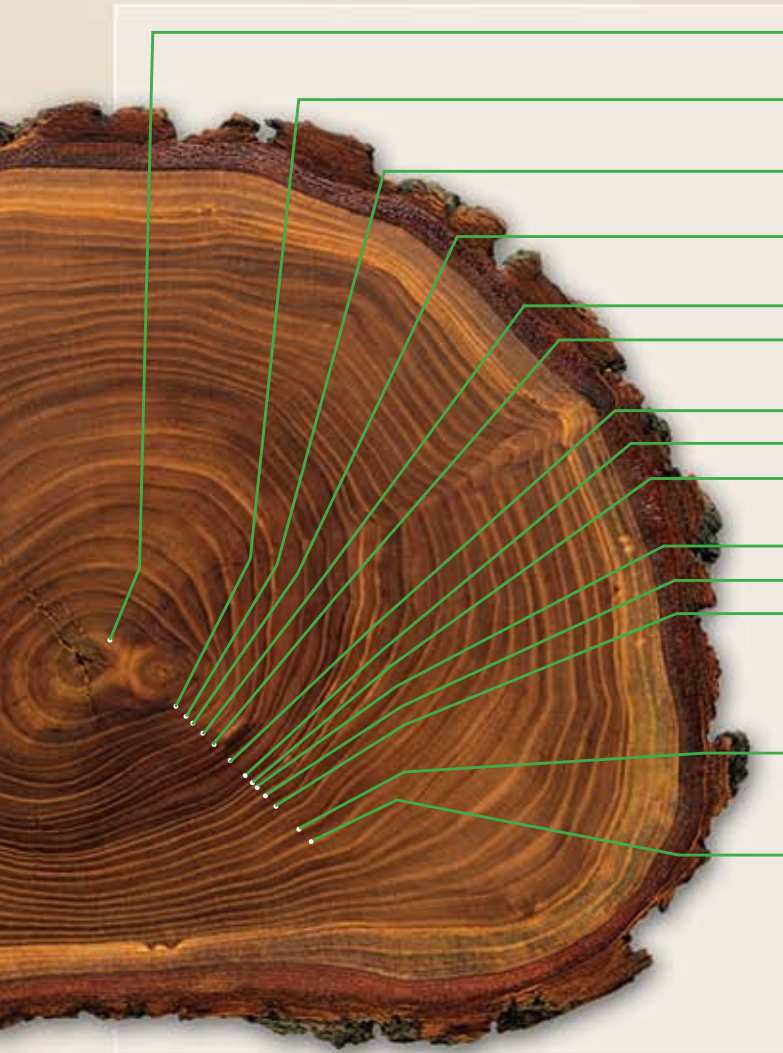


| HARDWOOD FACE/MEL. BACK PBC | 4'x8' |
|--|-------|
| 3/4" - A-P/S Alder BM / Wht. Mel. Back | |
| 3/4" - A-P/S Alder/Hardrock Maple Mel. | |
| 3/4" - A-P/S Knotty Alder / Wht. Mel. | |
| 3/4" - A Wht. Birch 1PF / Wht. Mel. | |
| 3/4" - A-P/S Wht. Maple / Wht. Mel. | |
| 3/4" - A-P/S Wht. Maple / Hardrock Maple | |
| 3/4" - A-Rot Wht. Maple 1PF / Wht. Mel. | |

| HARDWOOD FACE/MEL. BACK PBC | 4'x8' |
|---|-------|
| 3/4" - A-Rot Wht. Maple 1PF / Hardrock Map. | |
| 3/4" - A-Rot Red Oak 1PF / Wht. Mel. | |
| 3/4" - A-P/S Red Oak / Wht. Mel. | |
| 3/4" - A-P/S Cherry / Wht. Mel. | |
| 3/4" - A-P/S Euro Stmd Beech / Wht. Mel. Back | |

| VINYL | 4'x8' |
|----------------------|-------|
| 1/4" - Almond 1s MDF | |
| 1/4" - White 1s MDF | |
| 1/4" - White 2s MDF | |
| 1/2" - White 1s PB | |
| 5/8" - White 1s PB | |
| 3/4" - White 1s PB | |
| 3/4" - White 2s PB | |

Our History - Five Decades of Quality Products and Customer Service



- 1958 - Don Weber opens Weber Plywood in Santa Ana, CA.
- 1959 - Purchased first forklift – Army Surplus.
- 1964 - Moved to new location on Grand Ave. in Santa Ana.
- 1968 - 10 Year Anniversary. 10 Employees.
- 1977 - Moved to current location in Tustin. 20 Employees.
- 1978 - 20 Year Anniversary. 25 Employees.
 - Purchased Peterbilt tractor-trailer with a 38' bed.
- 1980 - First month \$1 million in sales.
- 1988 - 30 Year Anniversary. 40 Employees.
- 1994 - Operation systems upgraded from MAI Basic 4 to Unix System.
- 1998 - 40 Year Anniversary. \$2 million in monthly sales.
- 2000 - Millennium Celebration. 52 Employees, 11 trucks.
- 2002 - Became a full line 'Platinum' Panolam distribution - largest distribution in U.S.
 - Partnership with Timber Products becoming their largest distributor in Southern California.
- 2004 - Purchased short mast forklift for quicker container unloading.
- 2006 - 48 Years in Business. 52 Employees, 12 Delivery trucks.
 - Daily deliveries to all of Southern California and still #1 in service & quality.



Don Weber Circa 1958



Don Weber Today

